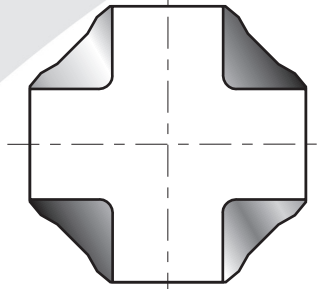
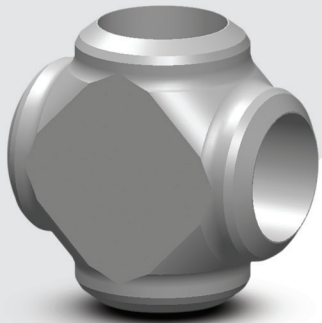


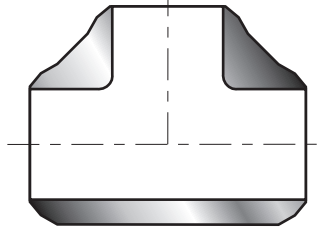
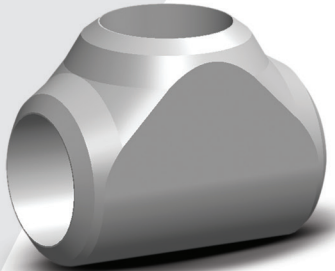
Seamless Crosses, Tees, Laterals, Wyes, Caps, & Hemispheres

dimensions



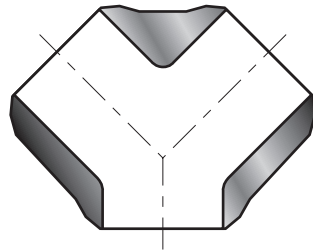
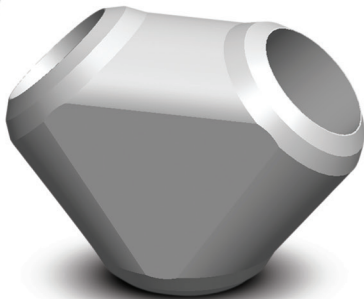
Seamless Butt-Weld Crosses

Dimensions: ASME B16.9
Styles: Straight, Reducing, and Cushing
Sizes: 3/4" thru 20"
Materials: All material grades



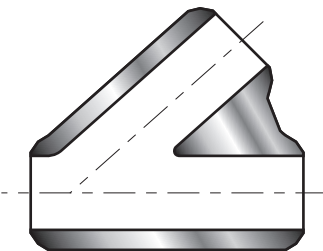
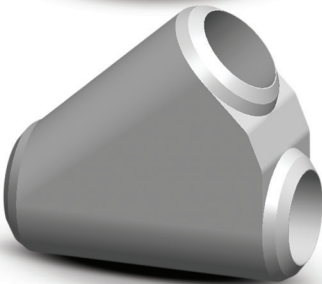
Seamless Butt-Weld Tees

Dimensions: ASME B16.9
Styles: Straight, Reducing, and Cushing
Sizes: 3/4" thru 20"
Materials: All material grades



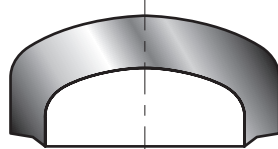
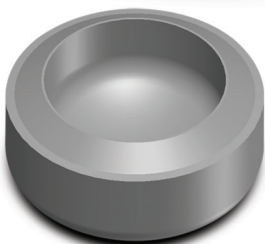
Seamless Butt-Weld Wyes

Styles: Straight, Reducing, and Eccentric
Sizes: 3/4" thru 20"
Materials: All material grades



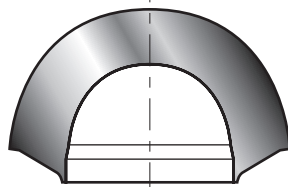
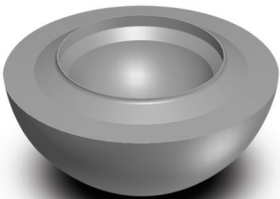
Seamless Butt-Weld Laterals

Styles: Straight, Reducing, and Eccentric
Sizes: 3/4" thru 18"
Materials: All material grades



Butt-Weld Caps

For applications calling for heavy wall or non-charted sizes.
Dimensions: ASME B16.9
Sizes: 3/4" thru 12"
Materials: All material grades



Hemisphere Head Cap

For applications calling for heavy wall or non-charted sizes.
Dimensions: ASME Section VIII Division 1
Sizes: 3/4" thru 12"
Materials: All material grades