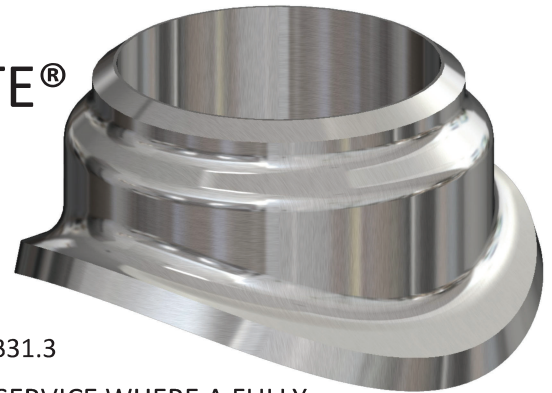


BUTT WELD INSERT BRANCHETTE®



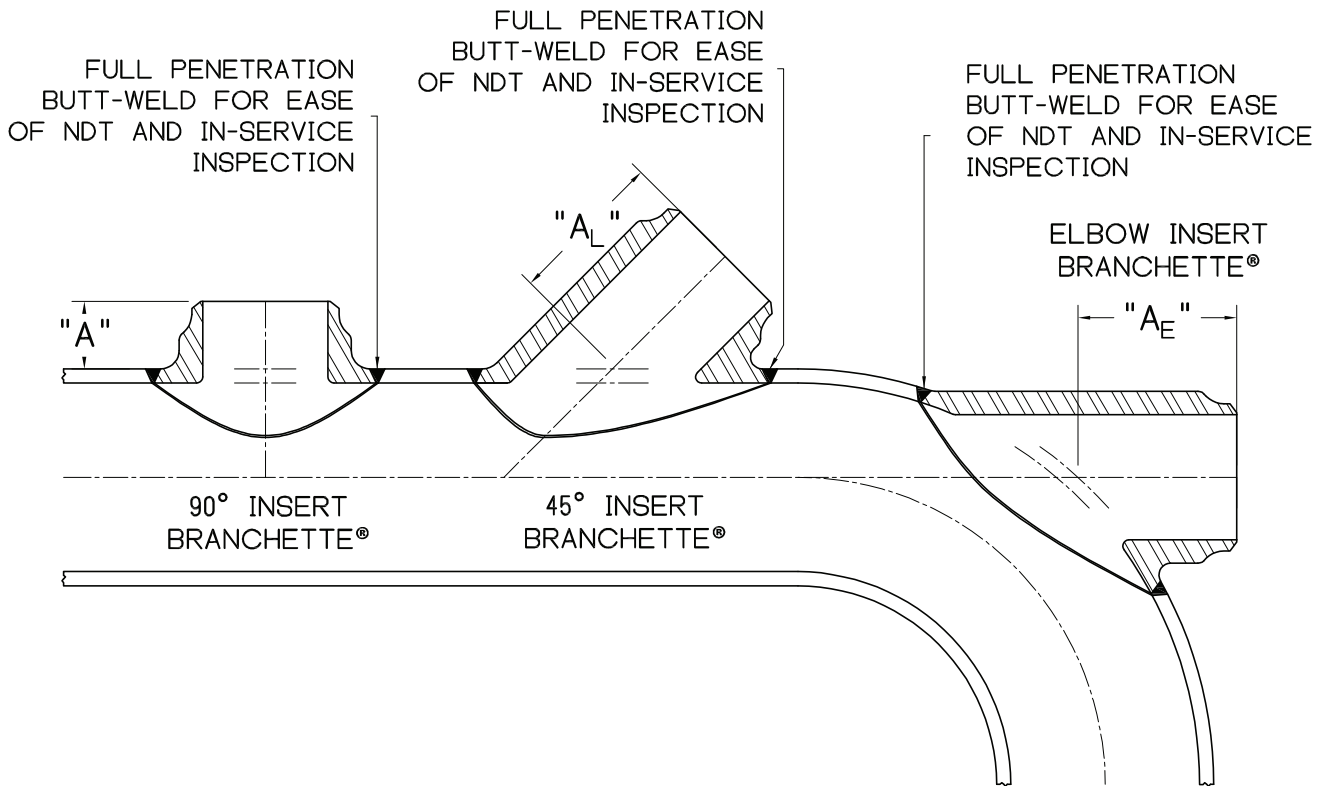
SIZE : 1/2 - 24

IDENTIFICATION : STANDARD, X-STG, SCH.160, XX-STG

MATERIAL : ALL ASTM / ASME MATERIAL GRADES

PRODUCT CONFORMITY : MSS SP-97, ASME B16.25, ASME B31.1, ASME B31.3

INSERT BRANCHETTES ARE DESIGNED SPECIFICALLY FOR CRITICAL SERVICE WHERE A FULLY INTERPRETABLE X-RAY IS REQUIRED AT THE OUTLET-TO-HEADER WELD. THIS INTEGRAL DESIGN SATISFIES ASME CODE REQUIREMENTS BY RESTORING 100% OF PIPE STRENGTH. THE INSERT BRANCHETTE IS IDEAL FOR CYCLIC CONDITIONS INCLUDING PRESSURE CYCLES AND OR THERMAL CYCLES. THE INSERT BRANCHETTE IS DESIGNED AND CONTOURED TO PROVIDE A FLUSH FIT WITH THE RUN PIPE O.D. AND I.D. IN MOST APPLICATIONS, THE INSERT BRANCHETTE IS ROUND, FACILITATING THE USE OF AUTOMATIC CIRCLE BURNING AND WELDING EQUIPMENT.



90° INSERT BRANCHETTE "A" DIMENSIONS & MINIMUM HEADER

BRANCH NPS	"A"	HEADER RANGE	BRANCH NPS	"A"	HEADER RANGE	BRANCH NPS	"A"	HEADER RANGE	BRANCH NPS	"A"	HEADER RANGE
1/2	1 1/4	≥ 1	2	1 3/4	≥ 3	8	3	≥ 10	18	4 5/8	≥ 20
3/4	1 1/4	≥ 1 1/4	3	1 11/16	≥ 4	10	3 1/8	≥ 14	20	5 1/8	≥ 24
1	1 1/4	≥ 1/2	4	2 1/16	≥ 5	12	3 5/16	≥ 16	24	5 5/8	≥ 28
1 1/4	1 1/4	≥ 2	5	2 1/4	≥ 6	14	3 5/8	≥ 16			
1 1/2	1 1/2	≥ 2 1/2	6	2 11/16	≥ 8	16	3 3/4	≥ 18			

NOTES: 1. LARGER SIZES, SPECIAL DIMENSIONS, AND SPECIAL WALL THICKNESSES AVAILABLE

2. "A" DIMENSION APPLICABLE TO STANDARD AND EXTRA STRONG ONLY

3. "AL" AND "AE" AVAILABLE UPON REQUEST

PLEASE REFER TO PAGE 22 FOR AVIATION FUEL PIPING INSERT BRANCHETTES®