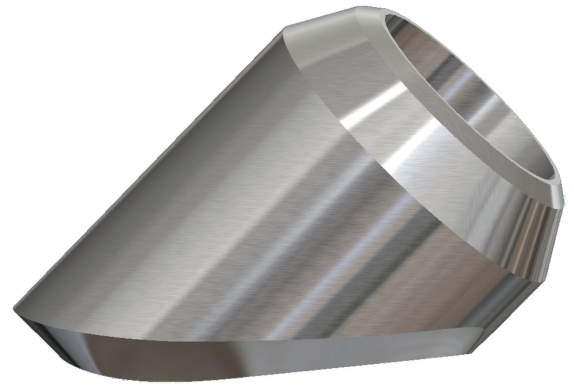
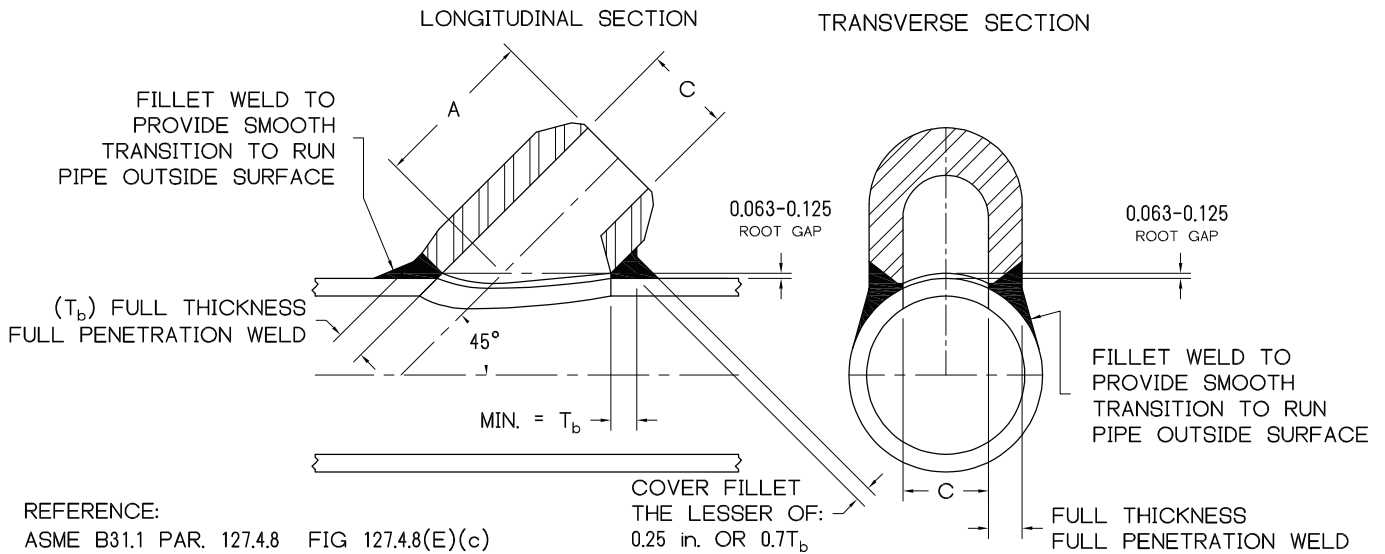


BUTT WELD LATERAL BRANCHETTE®



SIZE : 1/4 - 2 **IDENTIFICATION :** STANDARD, X-STG, SCH.160, XX-STG
MATERIAL : ALL ASTM / ASME MATERIAL GRADES
PRODUCT CONFORMITY : MSS SP-97, ASME B16.25, ASME B31.1, ASME B31.3



REFERENCE:
 ASME B31.1 PAR. 127.4.8 FIG 127.4.8(E)(c)

DIMENSIONS AND CONSOLIDATIONS												
NPS	STANDARD			X-STG			SCH.160			XX-STG		
	A	C	CONSOLIDATION	A	C	CONSOLIDATION	A	C	CONSOLIDATION	A	C	CONSOLIDATION
1/4	1 9/16	0.364	36 - 1/4	1 9/16	0.302	36 - 1/4						
3/8	1 9/16	0.493	36 - 3/8	1 9/16	0.423	36 - 3/8						
1/2	1 9/16	0.622	1/2 36 - 3/4	1 9/16	0.546	1/2 36 - 3/4	1 3/4	0.464	36 - 1/2	1 3/4	0.252	36 - 1/2
3/4	1 13/16	0.824	1 - 3/4 36 - 1 1/4	1 13/16	0.742	3/4 36 - 1	1 15/16	0.612	36 - 3/4	1 15/16	0.434	36 - 3/4
1	2 3/16	1.049	1 1 1/2 - 1 1/4 36 - 2	2 3/16	0.957	1 1/2 - 1 36 - 2	2 3/8	0.815	1 36 - 1 1/4	2 3/8	0.599	36 - 1
1 1/4	2 3/16	1.380	1 1/2 - 1 1/4 3 - 2 36 - 3 1/2	2 3/16	1.278	1 1/4 2 1/2 - 1 1/2 36 - 3	2 7/8	1.160	2 - 1 1/4 36 - 2 1/2	2 7/8	0.896	1 1/4 36 - 1 1/2
1 1/2	2 9/16	1.610	2 - 1 1/2 4 - 2 1/2 36 - 5	2 9/16	1.500	2 - 1 1/2 4 - 2 1/2 36 - 5	3 1/4	1.338	1 1/2 3 - 2 36 - 3 1/2	3 1/4	1.100	2 - 1 1/2 36 - 2 1/2
2	2 13/16	2.067	2 2 1/2 3 1/2 - 3 6 - 4 36 - 8	2 13/16	1.939	2 3 - 2 1/2 6 - 3 1/2 36 - 8	3 11/16	1.687	2 1/2 - 2 5 - 3 36 - 6	3 11/16	1.503	2 4 - 2 1/2 36 - 5

NOTES : 1. LARGER SIZES AND SPECIAL DIMENSIONS AVAILABLE

2. T_b AVAILABLE UPON REQUEST