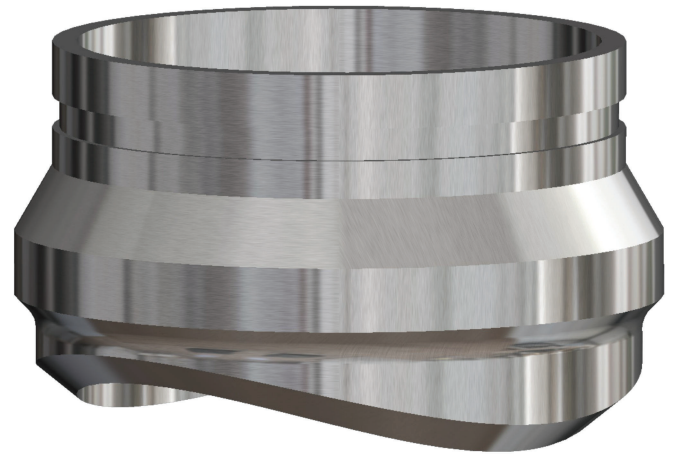
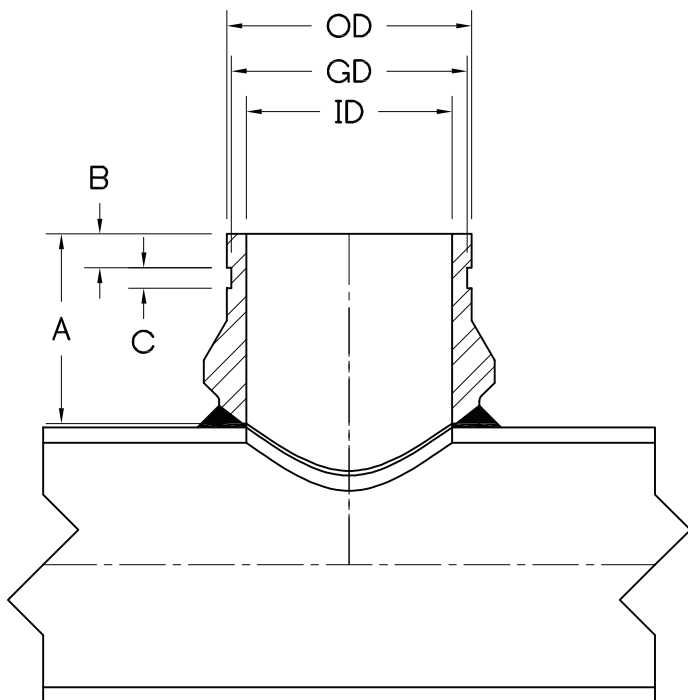


HVAC GROOVETTE®



SIZE: 4 - 24 **IDENTIFICATION :** SCH.10s, SCH.40s, STANDARD
MATERIAL : A105, F304/L, F316/L
PRODUCT CONFORMITY : MSS SP-97, ASME B31.9

HVAC GROOVETTE®



NOW AVAILABLE IN 4" THROUGH 24" GROOVED-END OUTLETS DESIGNED SPECIFICALLY FOR USE WITH GROOVED-END MECHANICAL PIPING SYSTEMS. THE WOI GROOVETTE® UTILIZES A STRAIGHT BORE DESIGN WITH AN INDUSTRY STANDARD MACHINED GROOVE. IT IS DESIGNED TO HAVE A CONSISTENT HEIGHT FROM THE OD OF THE RUN PIPE TO THE GROOVE. THE WOI GROOVETTE® ELIMINATES THE NEED FOR WELDING A GROOVED NIPPLE TO A STANDARD OUTLET FITTING. THE WOI GROOVETTE® IS PRODUCED IN A105, A182 F304/L, A182 F316/L MATERIALS, AND CAN BE MANUFACTURED FROM OTHER MATERIALS UPON REQUEST.

BASIC DIMENSIONS						
NPS	OD	GD	ID	A	B	C
4	4.500	4.334	4.026	3.375	0.625	0.375
5	5.563	5.395	5.047	3.625	0.625	0.375
6	6.625	6.455	6.065	3.750	0.625	0.375
8	8.625	8.441	7.981	4.375	0.750	0.438
10	10.750	10.562	10.020	4.750	0.750	0.500
12	12.750	12.531	12.000	5.125	0.750	0.500
14	14.000	13.781	13.250	5.500	0.938	0.500
16	16.000	15.781	15.250	5.688	0.938	0.500
18	18.000	17.781	17.250	5.875	1.000	0.500
20	20.000	19.781	19.250	6.063	1.000	0.500
22	22.000	21.656	21.250	6.500	1.000	0.563
24	24.000	23.656	23.250	6.750	1.000	0.563

ADVANTAGES

ELIMINATE A COSTLY REDUCING TEE, TWO COUPLINGS AND TWO GASKETS.

NO MORE ALIGNMENT AND FIT UP PROBLEMS WHEN CONNECTING A GROOVED-END NIPPLE TO A BRANCH OUTLET.

ELIMINATE ONE GROOVED-END NIPPLE FOR ATTACHMENT TO A STANDARD BRANCH CONNECTION.

ELIMINATE ONE WELD AT NIPPLE TO BRANCH CONNECTION.

NOTES: 1. SPECIAL DIMENSIONS AVAILABLE
 2. GROOVE DIMENSIONS ARE IN ACCORDANCE WITH INDUSTRY STANDARD CUT GROOVE DETAILS