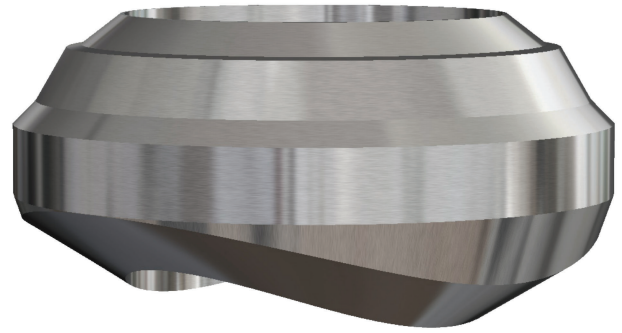
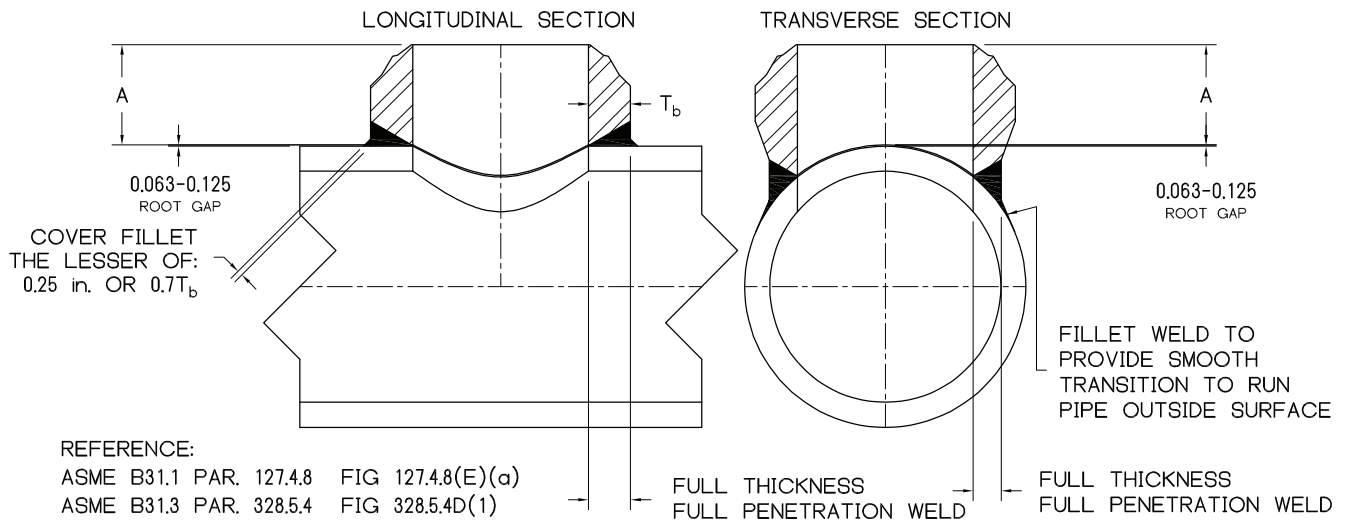


# HEAVY WALL BUTT WELD BRANCHETTE®



**SIZE :** 3 - 24      **IDENTIFICATION :** GREATER THAN X-STG  
**MATERIAL :** ALL ASTM / ASME MATERIAL GRADES  
**PRODUCT CONFORMITY :** MSS SP-97, ASME B16.25, ASME B31.1, ASME B31.3



"A" DIMENSIONS BASED ON HEADER WALL THICKNESS										
NPS	3/4	1	1 1/4	1 1/2	1 3/4	2	2 1/4	2 1/2	2 3/4	3
3	2 7/8	3 1/4	3 3/8	3 5/8	4 1/8	4 9/16	5	5 1/2	5 7/8	6 1/16
3 1/2	3 1/8	3 1/4	3 7/16	3 3/4	4 3/16	4 5/8	5 1/16	5 9/16	6	6 5/16
4	3 5/16	3 3/8	3 1/2	3 7/8	4 5/16	4 3/4	5 3/16	5 5/8	6 1/8	6 9/16
5	3 3/4	3 3/4	4	4 1/4	4 3/4	5 1/4	5 3/4	6 1/4	6 5/8	7 3/16
6	4 1/8	4 3/8	4 1/2	4 11/16	5 1/4	5 3/4	6 1/4	6 3/4	7 1/4	7 13/16
8	4 3/16	4 5/8	4 7/8	5 3/16	5 3/4	6 3/8	6 15/16	7 1/2	8 1/8	8 11/16
10	4 1/4	4 7/8	5	5 5/16	5 15/16	6 9/16	7 3/16	7 13/16	8 7/16	9 1/16
12	4 3/8	5 1/8	5 3/8	5 11/16	6 5/16	6 15/16	7 9/16	8 3/16	8 13/16	9 7/16
14	4 1/2	5 1/4	5 1/2	5 13/16	6 5/16	6 15/16	7 9/16	8 3/16	8 13/16	9 7/16
16	4 11/16	5 7/8	6	6 7/16	6 5/8	7 1/4	7 7/8	8 1/2	9 1/8	9 3/4
18	5 1/8	6 1/2	6 1/2	6 1/2	6 13/16	7 7/16	8 1/4	8 13/16	9 7/16	10 1/16
20	5 5/8	6 3/4	7	7 9/16	7 13/16	8 1/8	8 11/16	9 1/4	9 15/16	10 3/8
24	6 1/2	7 5/8	8	8 3/4	9	9 13/16	10 1/2	11	12 9/16	10 11/16

THE CORRECT WAY TO READ THE HEAVY WALL CHART IS AS FOLLOWS, USING THE EXAMPLE 24 1.625 NW X 12 SCH.80 BUTT-WELD BRANCHETTE. THE RUN PIPE WALL THICKNESS IS GREATER THAN 1.500" AND LESS THAN 1.750", THEREFORE, USE THE "A" DIMENSION FOR THE 12" BRANCH SIZE UNDER THE 1 3/4" RUN WALL THICKNESS COLUMN. THE "A" DIMENSION FOR THIS BWB IS 6 5/16".

**NOTES :** 1. LARGER SIZES AND SPECIAL DIMENSIONS AVAILABLE