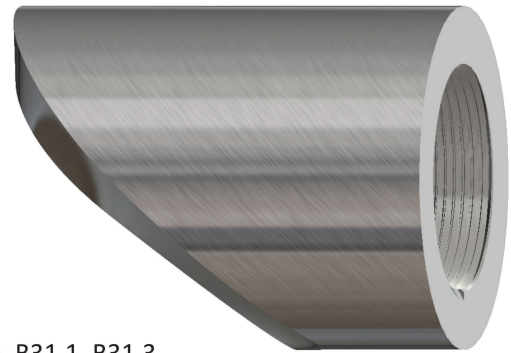
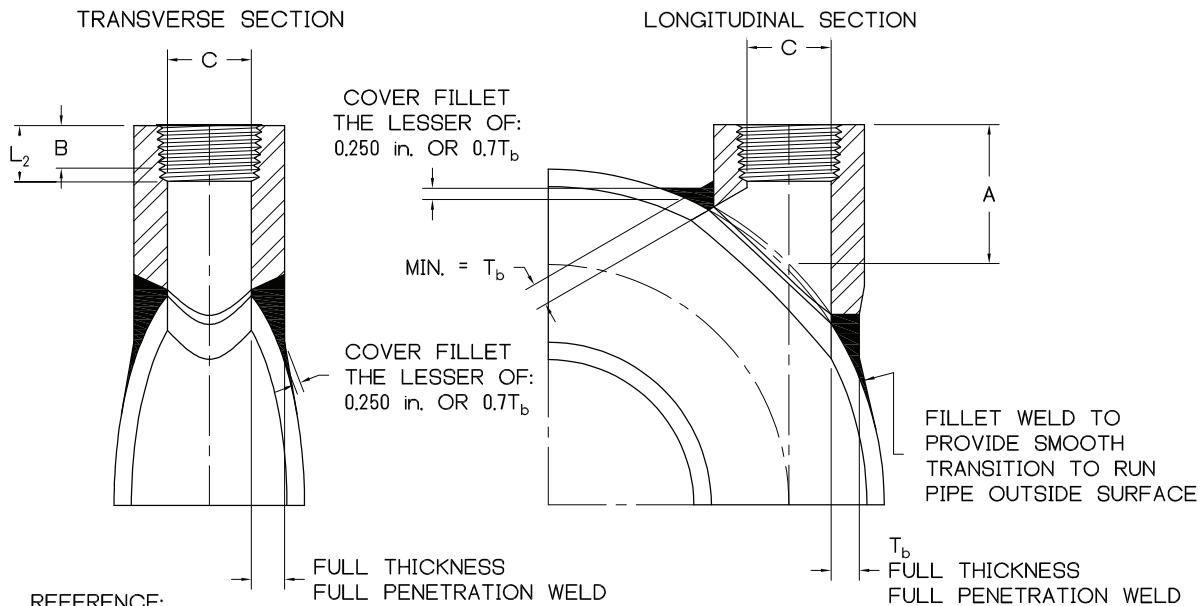


THREADED ELBOW BRANCHETTE®



SIZE : 1/4 - 2 **CLASS :** 3000, 6000, 10000
MATERIAL : ALL ASTM / ASME MATERIAL GRADES
PRODUCT CONFORMITY : MSS SP-97, ASME B16.11, ASME B1.20.1 (NPT), B31.1, B31.3



REFERENCE:
 ASME B31.1 PAR. 127.4.8 FIG 127.4.8(E)(c)

COVER FILLET NOTE: The minimum cover weld throat thickness applies when the angle between the branch fitting groove weld face and the run pipe surface is less than 135 deg. For areas where the angle between the groove weld face and the run pipe surface is 135 deg or greater, the cover weld may transition to nothing. Cover fillet shall provide a smooth transition to run pipe.

DIMENSIONS AND CONSOLIDATIONS

NPS	SEE NOTE 2		CONSOLIDATION (ALL CLASSES)	CL.3000 (3M) RUN PIPE CORRELATION: X-STG			CL.6000 (6M) RUN PIPE CORRELATION: SCH.160			CL.10000 (10M) RUN PIPE CORRELATION: XX-STG		
	B	L ₂		A	C	WT	A	C	WT	A	C	WT
1/4	0.32	0.4018	36 - 3/4	1.125	0.437	0.15	1.563	0.437	0.28	1.625	0.437	0.49
3/8	0.36	0.4078	36 - 3/4	1.25	0.578	0.18	1.625	0.578	0.43	1.688	0.578	0.69
1/2	0.43	0.5337	36 - 3/4	1.375	0.718	0.28	1.750	0.718	0.78	1.750	0.718	0.99
3/4	0.50	0.5457	36 - 1	1.563	0.922	0.43	2.000	0.922	1.13	2.063	0.922	1.95
1	0.58	0.6828	36 - 2	1.938	1.141	0.84	2.250	1.141	2.06	2.313	1.141	2.59
1 1/4	0.67	0.7068	36 - 2	2.125	1.500	1.54	2.500	1.500	2.50	2.625	1.500	4.05
1 1/2	0.70	0.7235	36 - 2	2.313	1.734	1.98	2.750	1.734	4.16	2.938	1.734	6.7
2	0.75	0.7565	36 - 3	2.688	2.219	3.03	3.375	2.219	7.31	3.500	2.219	10.69

- NOTES :** 1. LARGER SIZES, SPECIAL DIMENSIONS AND SPECIAL THREADS AVAILABLE
 2. DIMENSION B IS MINIMUM OF PERFECT THREAD. THE LENGTH OF USEFUL THREAD (B PLUS THREADS WITH FULLY FORMED ROOTS AND FLAT CRESTS) SHALL NOT BE LESS THAN L₂ (EFFECTIVE LENGTH OF EXTERNAL THREADED) PER ASME B1.20.1
 3. T_b AVAILABLE UPON REQUEST