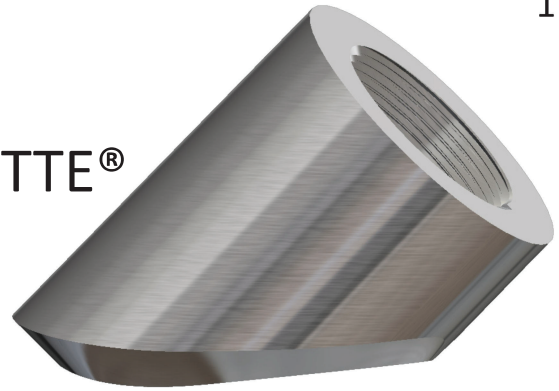
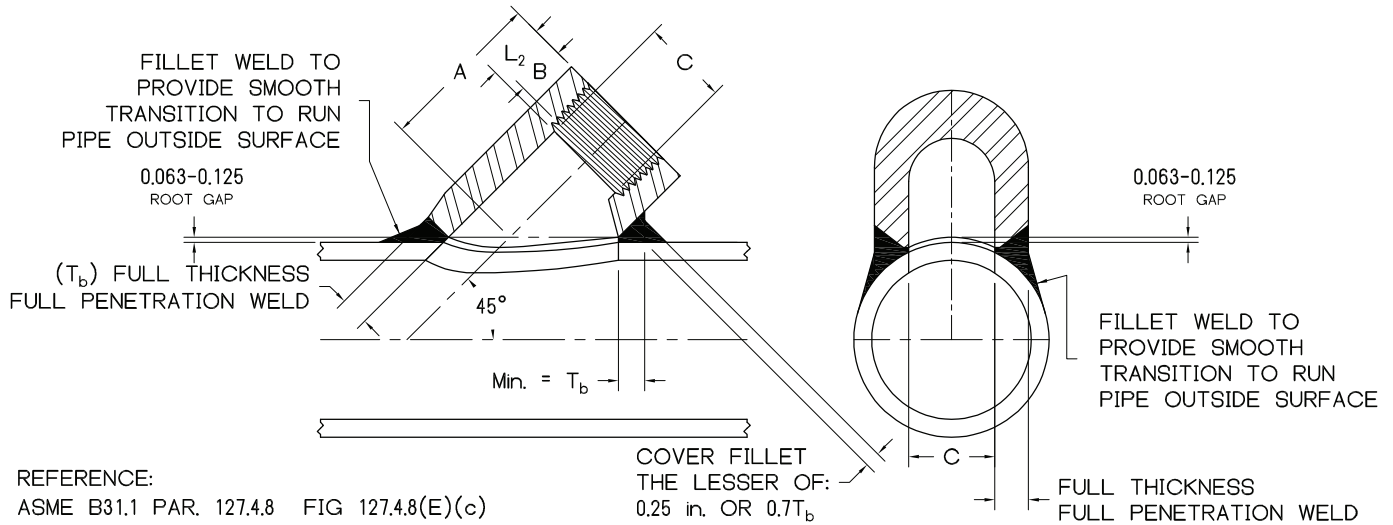


THREADED LATERAL BRANCHETTE®



SIZE : 1/2 - 2 **CLASS :** 3000, 6000, 10000
MATERIAL : ALL ASTM / ASME MATERIAL GRADES
PRODUCT CONFORMITY : MSS SP-97, ASME B16.11, ASME B1.20.1 (NPT), B31.1, B31.3

LONGITUDINAL SECTION TRANSVERSE SECTION



REFERENCE:
 ASME B31.1 PAR. 127.4.8 FIG 127.4.8(E)(c)

DIMENSIONS AND CONSOLIDATIONS

NPS	SEE NOTE 2		CONSOLIDATION (ALL CLASSES)	CL.3000 (3M) RUN PIPE CORRELATION: X-STG			CL.6000 (6M) RUN PIPE CORRELATION: SCH.160			CL.10000 (10M) RUN PIPE CORRELATION: XX-STG		
	B	L ₂		A	C	WT	A	C	WT	A	C	WT
1/2	0.43	0.5337	3/4 - 1/2 36 - 1	1.563	0.718	0.27	2	0.718	0.77	2.125	0.718	1.17
3/4	0.50	0.5457	3/4 1 1/4 - 1 36 - 1 1/2	1.875	0.922	0.42	2.313	0.922	1.14	2.563	0.922	2.35
1	0.58	0.6828	1 2 - 1 1/4 36 - 2 1/2	2.188	1.141	0.87	2.688	1.141	2.23	2.813	1.141	3.05
1 1/4	0.67	0.7068	1 1/4 2 - 1 1/2 4 - 2 1/2 36 - 5	2.500	1.500	1.61	2.875	1.500	2.63	3.125	1.500	4.68
1 1/2	0.70	0.7235	1 1/2 2 1/2 - 2 5 - 3 36 - 6	2.563	1.734	2.02	3.188	1.718	4.32	3.500	1.734	7.85
2	0.75	0.7565	2 2 1/2 3 4 - 3 1/2 8 - 5 36 - 10	3.063	2.219	2.97	3.875	2.188	7.37	4.188	2.219	12.39

- NOTES :** 1. LARGER SIZES, SPECIAL DIMENSIONS AND SPECIAL THREADS AVAILABLE
 2. DIMENSION B IS MINIMUM OF PERFECT THREAD. THE LENGTH OF USEFUL THREAD (B PLUS THREADS WITH FULLY FORMED ROOTS AND FLAT CRESTS) SHALL NOT BE LESS THAN L₂ (EFFECTIVE LENGTH OF EXTERNAL THREADED) PER ASME B1.20.1
 3. T_b AVAILABLE UPON REQUEST