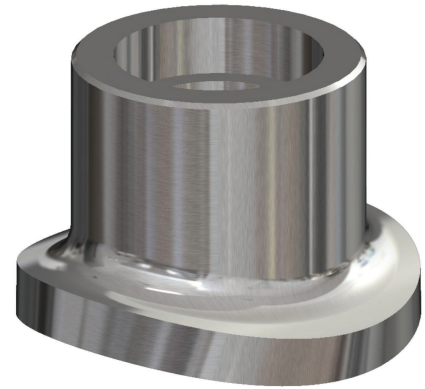


# AVIATION FUEL PIPING INSERT BRANCHETTE®



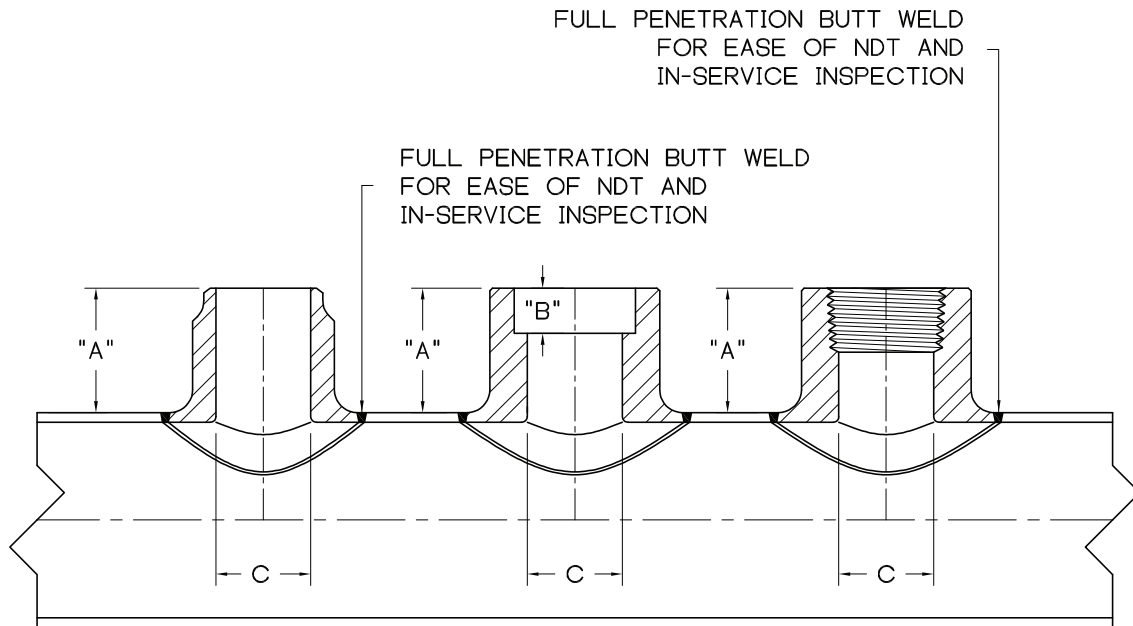
**SIZE :** 1/2 - 2

**IDENTIFICATION:** SCH.10s, SCH.40s, SCH.80s, CL.150, CL.300, CL.3000

**MATERIAL :** A105, F304/L, F316/L

**PRODUCT CONFORMITY :** MSS SP-97, ASME B16.11, ASME B1.20.1 (NPT), ASME B31.1, ASME B31.3

AVIATION FUEL INSERT BRANCHETTES® ARE DESIGNED SPECIFICALLY FOR AVIATION FUEL PIPING WHERE A FULLY INTERPRETABLE X-RAY IS REQUIRED AT THE OUTLET-TO-HEADER WELD. THE AVIATION INSERT BRANCHETTE® IS DESIGNED AND CONTOURED TO PROVIDE A FLUSH FIT WITH THE RUN PIPE O.D. AND I.D. IN MOST APPLICATIONS, THE AVIATION INSERT BRANCHETTE® IS ROUND, FACILITATING THE USE OF AUTOMATIC CIRCLE BURNING AND WELDING EQUIPMENT.



AVIATION FUEL PIPING BUTT WELD INSERT BRANCHETTE®      AVIATION FUEL PIPING SOCKET WELD INSERT BRANCHETTE®      AVIATION FUEL PIPING THREADED INSERT BRANCHETTE®

### BASIC DIMENSIONS AND CONSOLIDATIONS

NPS	STD BUTT WELD			3M SOCKET WELD				3M THREADED		
	A	C	HEADER RANGE	A	B	C	HEADER RANGE	A	C	HEADER RANGE
1/2	1.250	0.622	≥ NPS 1	0.938	0.375	0.622	≥ NPS 1	1.000	0.703	≥ NPS 1
3/4	1.250	0.824	≥ NPS 1 1/4	1.063	0.500	0.824	≥ NPS 1 1/4	1.063	0.906	≥ NPS 1 1/4
1	1.250	1.049	≥ NPS 1 1/2	1.313	0.500	1.049	≥ NPS 1 1/2	1.313	1.141	≥ NPS 1 1/2
1 1/4	1.250	1.380	≥ NPS 2	1.313	0.500	1.380	≥ NPS 2	1.313	1.484	≥ NPS 2
1 1/2	1.500	1.610	≥ NPS 2 1/2	1.375	0.500	1.610	≥ NPS 2 1/2	1.375	1.719	≥ NPS 2 1/2
2	1.750	2.067	≥ NPS 3	1.500	0.625	2.067	≥ NPS 3	1.500	2.188	≥ NPS 3

**NOTES :** 1. LARGER SIZES AND SPECIAL DIMENSIONS AVAILABLE