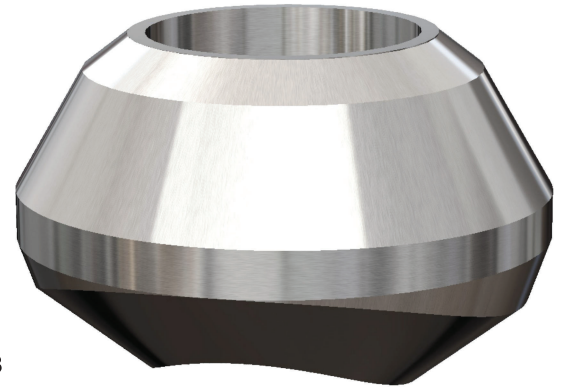
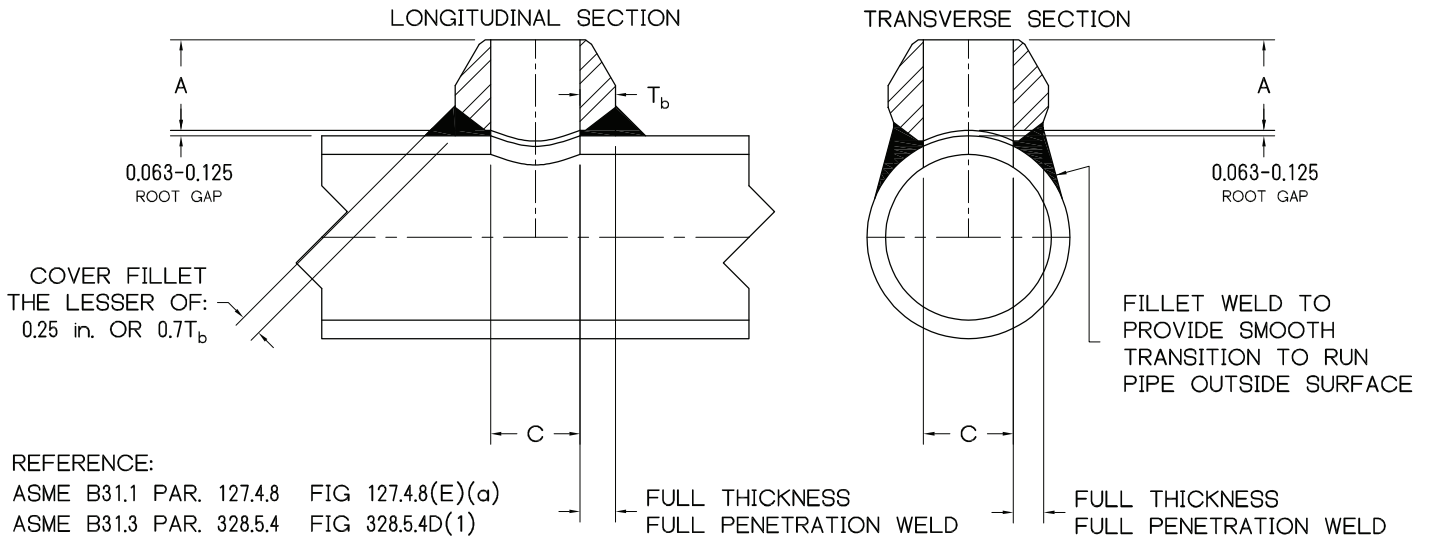


BUTT WELD BRANCHETTE®



SIZE : 1/8 - 72 **IDENTIFICATION :** STANDARD, X-STG, SCH.160, XX-STG
MATERIAL : ALL ASTM / ASME MATERIAL GRADES
PRODUCT CONFORMITY : MSS SP-97, ASME B16.25, ASME B31.1, ASME B31.3



DIMENSIONS AND CONSOLIDATIONS																
NPS	STANDARD				X-STG				SCH.160				XX-STG			
	A	C	WT	CONSOLIDATION	A	C	WT	CONSOLIDATION	A	C	WT	CONSOLIDATION	A	C	WT	CONSOLIDATION
1/8	0.62	0.269	0.08	36 - 1/8	0.62	0.215	0.10	36 - 1/8								
1/4	0.62	0.364	0.08	1/4 36 - 3/8	0.62	0.302	0.10	36 - 1/4								
3/8	0.75	0.493	0.10	1/2 - 3/8 36 - 3/4	0.75	0.423	0.12	3/8 36 - 1/2								
1/2	0.75	0.622	0.12	1 - 1/2 36 - 1 1/4	0.75	0.546	0.12	3/4 - 1/2 36 - 1	1.12	0.464	0.22	1/2 36 - 3/4	1.12	0.252	0.26	36 - 1/2
3/4	0.88	0.824	0.22	2 - 3/4 36 - 2 1/2	0.88	0.742	0.24	1 1/2 - 3/4 36 - 2	1.25	0.612	0.38	1 - 3/4 36 - 1 1/4	1.25	0.434	0.41	3/4 36 - 1
1	1.06	1.049	0.32	1 3 1/2 - 1 1/4 36 - 4	1.06	0.957	0.38	1 3 - 1 1/4 36 - 3 1/2	1.50	0.815	0.60	2 - 1 36 - 2 1/2	1.50	0.599	0.65	1 36 - 1 1/4
1 1/4	1.25	1.380	0.72	1 1/4 2 - 1 1/2 6 - 2 1/2 36 - 8	1.25	1.278	0.74	1 1/4 4 - 1 1/2 36 - 5	1.75	1.160	1.14	1 1/4 4 - 1 1/2 36 - 5	1.75	0.896	1.20	2 1/2 - 1 1/4 36 - 3
1 1/2	1.31	1.610	0.72	1 1/2 3 - 2 8 - 3 1/2 36 - 10	1.31	1.500	0.80	1 1/2 2 1/2 - 2 8 - 3 36 - 10	2.00	1.338	2.00	2 1/2 - 1 1/2 6 - 3 36 - 8	2.00	1.100	2.20	2 1/2 - 1 1/2 3 1/2 - 3 36 - 4
2	1.50	2.067	1.18	2 3 - 2 1/2 6 - 3 1/2 16 - 8 36 - 18	1.50	1.939	1.38	2 2 1/2 4 - 3 14 - 5 36 - 16	2.18	1.687	2.32	2 3 - 2 1/2 10 - 3 1/2 36 - 12	2.18	1.503	2.45	2 1/2 - 2 3 1/2 - 3 36 - 4

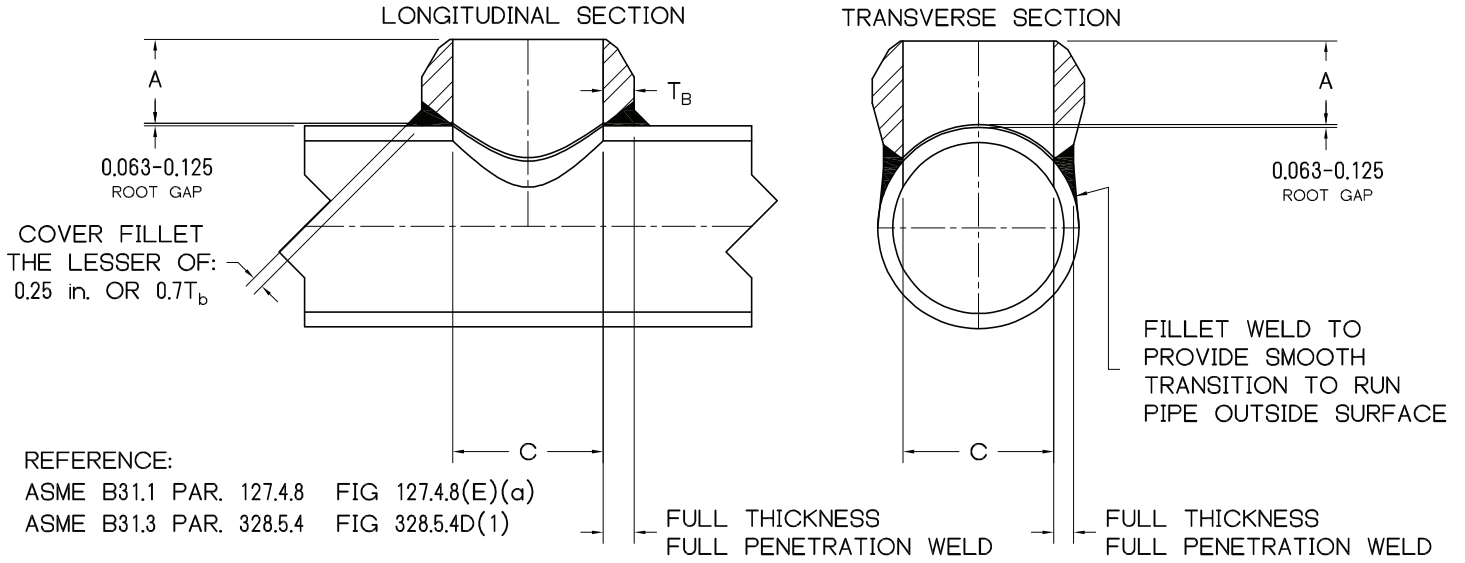
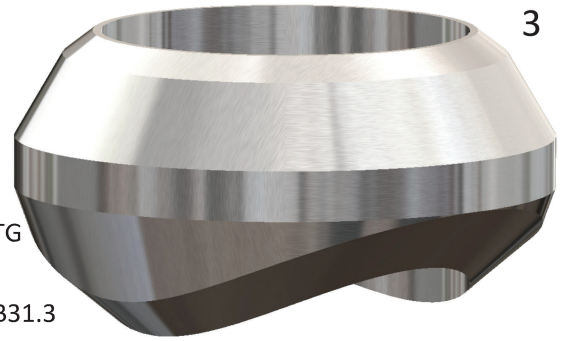
NOTES : 1. LARGER SIZES AND SPECIAL DIMENSIONS AVAILABLE 2. T_b AVAILABLE UPON REQUEST
 3. WEIGHTS BASED ON CARBON STEEL

BUTT WELD BRANCHETTE®

SIZE : 1/8 - 72 **IDENTIFICATION :** STANDARD, X-STG, SCH.160, XX-STG

MATERIAL : ALL ASTM / ASME MATERIAL GRADES

PRODUCT CONFORMITY : MSS SP-97, ASME B16.25, ASME B31.1, ASME B31.3



REFERENCE:
 ASME B31.1 PAR. 127.4.8 FIG 127.4.8(E)(a)
 ASME B31.3 PAR. 328.5.4 FIG 328.5.4D(1)

DIMENSIONS AND CONSOLIDATIONS

NPS	STANDARD				X-STG				SCH.160				XX-STG			
	A	C	WT	CONSOLIDATION	A	C	WT	CONSOLIDATION	A	C	WT	CONSOLIDATION	A	C	WT	CONSOLIDATION
2 1/2	1.62	2.469	2.20	2 1/2 3 1/2 - 3 5 - 4 12 - 6 24 - 14 36 - 26	1.62	2.323	2.55	2 1/2 3 1/2 - 3 6 - 4 24 - 8 36 - 26	2.44	2.125	2.95	2 1/2 3 5 - 3 1/2 16 - 6 36 - 18	2.44	1.771	3.20	4 - 2 1/2 10 - 5 36 - 12
3	1.75	3.068	2.68	3 4 - 3 1/2 6 - 5 14 - 8 36 - 16	1.75	2.900	3.28	3 4 - 3 1/2 6 - 5 10 - 8 32 - 12 36 - 34	2.88	2.624		ORDER TO EXACT HEADER SIZE	2.88	2.300		ORDER TO EXACT HEADER SIZE
3 1/2	1.88	3.548	3.23	SEE NOTE 2 4 5 6 8 16 - 10 50 - 18	1.88	3.364	4.05	SEE NOTE 2 4 5 6 10 - 8 22 - 12 44 - 24								
4	2.00	4.026	3.78	4 5 6 10 - 8 20 - 12 64 - 22	2.00	3.826	4.86	4 5 6 10 - 8 22 - 12 56 - 24	3.31	3.438		ORDER TO EXACT HEADER SIZE	3.31	3.152		ORDER TO EXACT HEADER SIZE

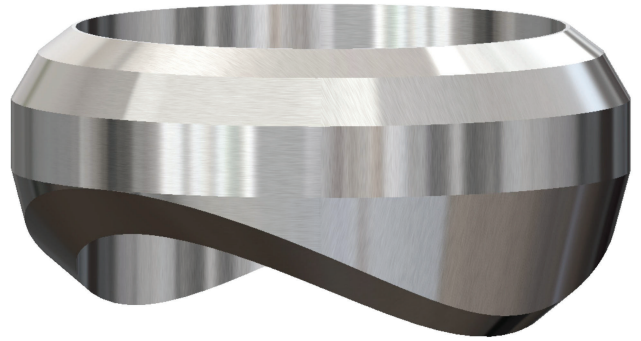
NOTES : 1. LARGER SIZES AND SPECIAL DIMENSIONS AVAILABLE

2. FOR FULL SIZE NPS 3 1/2, A = 2"

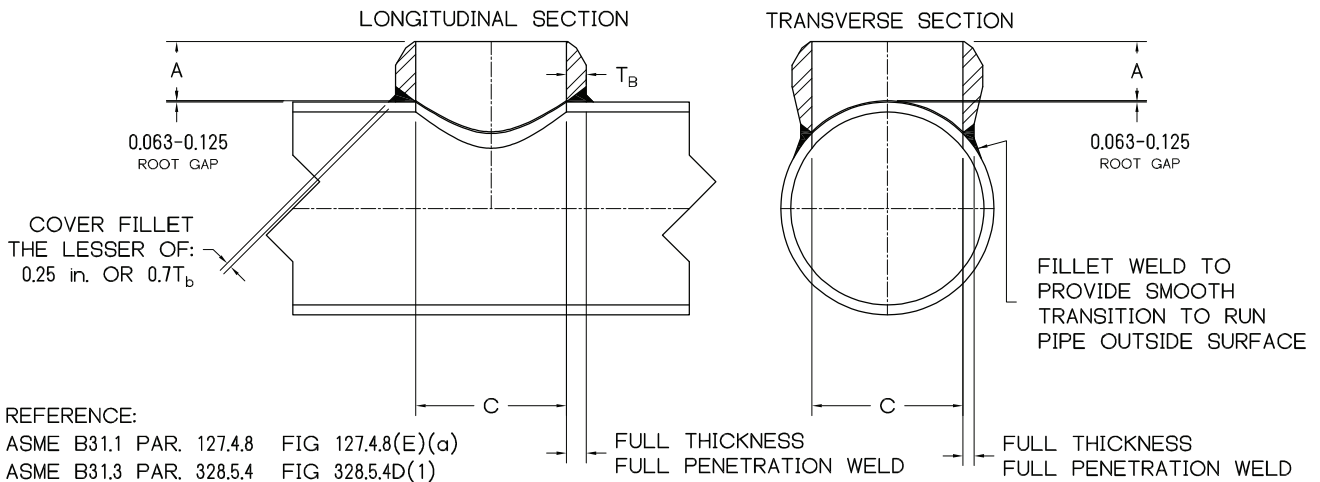
3. T_b AVAILABLE UPON REQUEST

4. WEIGHTS BASED ON CARBON STEEL

BUTT WELD BRANCHETTE®



SIZE : 1/8 - 72 **IDENTIFICATION :** STANDARD, X-STG, SCH.160, XX-STG
MATERIAL : ALL ASTM / ASME MATERIAL GRADES
PRODUCT CONFORMITY : MSS SP-97, ASME B16.25, ASME B31.1, ASME B31.3



DIMENSIONS AND CONSOLIDATIONS												
NPS	STANDARD		X-STG		SCH.160		XX-STG					
	A	C	A	C	A	C	A	C	A	C		
5	2 1/4	5.047	2 1/4	4.813	3 11/16	4.313	3 11/16	4.063				
6	2 3/8	6.065	3 1/16	5.761	4 1/8	5.187	4 1/8	4.897				
8	2 3/4	7.981	3 7/8	7.625		6.813		6.875				
10	3 1/16	10.020	3 11/16	9.750		8.500		8.750				
12	3 3/8	12.000	4 1/16	11.750		10.126		10.750				
14	3 1/2	13.250	3 15/16	13.000		11.188						
16	3 11/16	15.250	4 3/16	15.000		12.812						
18	3 13/16	17.250	4 3/8	17.000		14.438						
20	4	19.250	4 11/16	19.000		16.062						
22	4 3/8	21.250	5 1/8	21.000		17.750						
24	4 9/16	23.250	5 1/2	23.000		19.312						

- NOTES :**
- LARGER SIZES AND SPECIAL DIMENSIONS AVAILABLE
 - FOR FULL SIZE NPS 10 X-STG, A = 3 1/2
 - FOR FULL SIZE NPS 12 X-STG, A = 3 15/16
 - FOR FULL SIZE NPS 14 X-STG, A = 4 1/8
 - FOR FULL SIZE NPS 16 X-STG, A = 4 7/16
 - FOR FULL SIZE NPS 18 STD A = 4 1/16 / X-STG A = 4 11/16
 - FOR FULL SIZE NPS 20 STD A = 4 5/8 / X-STG A = 5
 - FOR FULL SIZE NPS 24 STD, A = 5 3/8