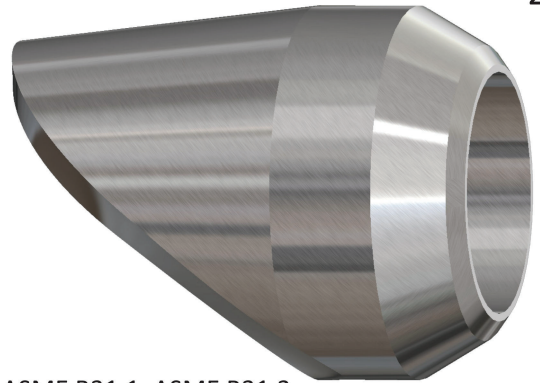


LOW WELD VOLUME ELBOW BRANCHETTE®

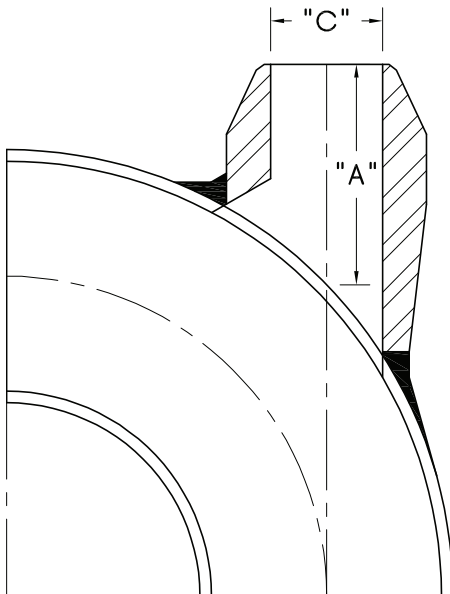


SIZE : 1/2 - 2 IDENTIFICATION: SCH.10s, SCH.40s CL.3000

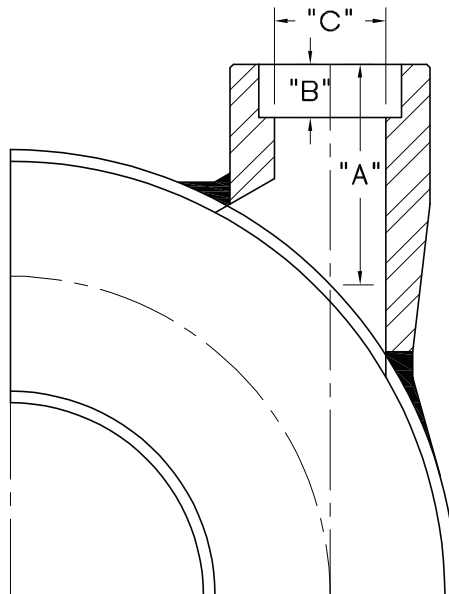
MATERIAL : STAINLESS F304L & F316L

PRODUCT CONFORMITY : MSS SP-97, ASME B16.11, ASME B1.20.1 (NPT), ASME B31.1, ASME B31.3

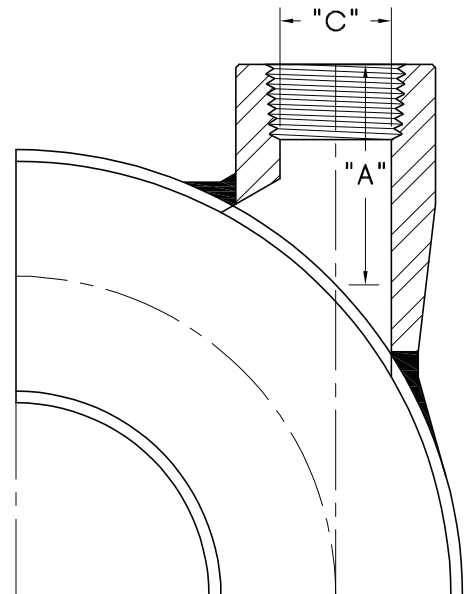
LOW WELD VOLUME
BUTT WELD ELBOW
BRANCHETTE®



LOW WELD VOLUME
SOCKET WELD ELBOW
BRANCHETTE®



LOW WELD VOLUME
THREADED ELBOW
BRANCHETTE®



WELDING REFERENCE:
ASME B31.1 PAR. 127.4.8 FIG 127.4.8(E)(b)

BASIC DIMENSIONS AND CONSOLIDATIONS										
NPS	SCH.10s BUTT WELD			SOCKET WELD				THREADED		
	A	C	CONSOLIDATION	A	B	C	CONSOLIDATION	A	C	CONSOLIDATION
1/2	1.188	0.674	36 - 3/4	1.563	0.375	0.622	36 - 3/4	1.375	0.703	36 - 3/4
3/4	1.375	0.884	36 - 1	1.875	0.500	0.824	36 - 1	1.563	0.906	36 - 1
1	1.688	1.097	36 - 2	2.188	0.500	1.049	36 - 2	1.938	1.141	36 - 2
1 1/4	2.063	1.442	36 - 2	2.500	0.500	1.380	36 - 2	2.125	1.484	36 - 2
1 1/2	2.250	1.682	36 - 2	2.563	0.500	1.610	36 - 2	2.313	1.719	36 - 2
2	2.625	2.157	36 - 3	3.063	0.625	2.067	36 - 3	2.688	2.188	36 - 3

NOTES : 1. LARGER SIZES AND SPECIAL DIMENSIONS AVAILABLE