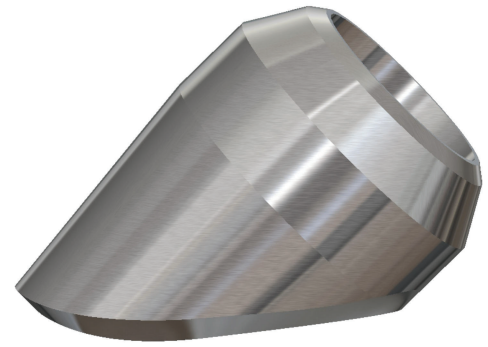


LOW WELD VOLUME LATERAL BRANCHETTES®

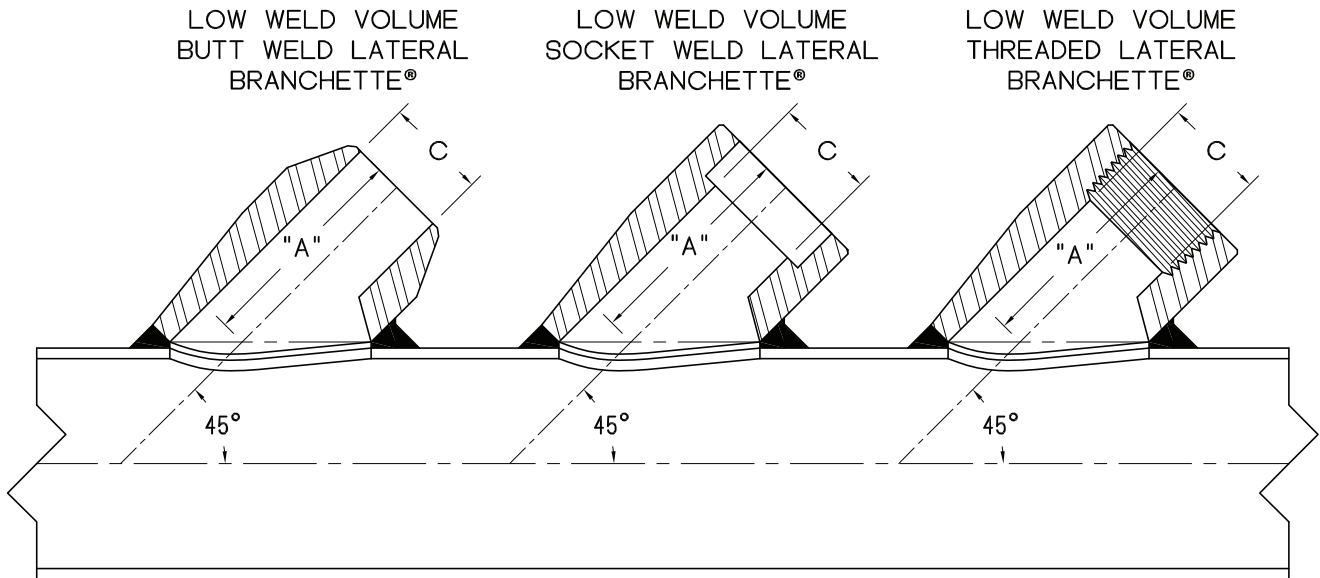


SIZE : 1/2 - 2

IDENTIFICATION: SCH.10s, SCH.40s CL.3000

MATERIAL : STAINLESS F304L & F316L

PRODUCT CONFORMITY : MSS SP-97, ASME B16.11, ASME B1.20.1 (NPT), ASME B31.1, ASME B31.3



REFERENCE:
ASME B31.1 PAR. 127.4.8 FIG 127.4.8(E)(c)

BASIC DIMENSIONS AND CONSOLIDATIONS										
NPS	SCH.10s BUTT WELD			SOCKET WELD				THREADED		
	A	C	CONSOLIDATION	A	B	C	CONSOLIDATION	A	C	CONSOLIDATION
1/2	1.563	0.674	1/2 36 - 3/4	1.563	0.375	0.622	1/2 36 - 3/4	1.563	0.703	3/4 - 1/2 36 - 1
3/4	1.813	0.884	1 1/4 - 3/4 36 - 1 1/2	1.875	0.500	0.824	1 - 3/4 36 - 1 1/4	1.872	0.906	3/4 1 1/4 - 1 36 - 1 1/2
1	2.188	1.097	1 2 - 1 1/4 36 - 2 1/2	2.188	0.500	1.049	1 1 1/2 - 1 1/4 36 - 2	2.188	1.141	1 2 - 1 1/4 36 - 2 1/2
1 1/4	2.188	1.442	1 1/2 - 1 1/4 3 1/2 - 2 36 - 4	2.500	0.500	1.380	1 1/2 - 1 1/4 3 - 2 36 - 3 1/2	2.500	1.484	1 1/4 2 - 1 1/2 4 - 2 1/2 36 - 5
1 1/2	2.563	1.682	1 1/2 2 1/2 - 2 5 - 3 36 - 6	2.563	0.500	1.610	2 - 1 1/2 4 - 2 1/2 36 - 5	2.563	1.719	1 1/2 2 1/2 - 2 5 - 3 36 - 6
2	2.938	2.157	2 2 1/2 4 - 3 8 - 5 36 - 10	3.063	0.625	2.067	2 2 1/2 3 1/2 - 3 6 - 4 36 - 8	3.063	2.188	2 2 1/2 3 4 - 3 1/2 8 - 5 36 - 10

NOTES : 1. LARGER SIZES AND SPECIAL DIMENSIONS AVAILABLE