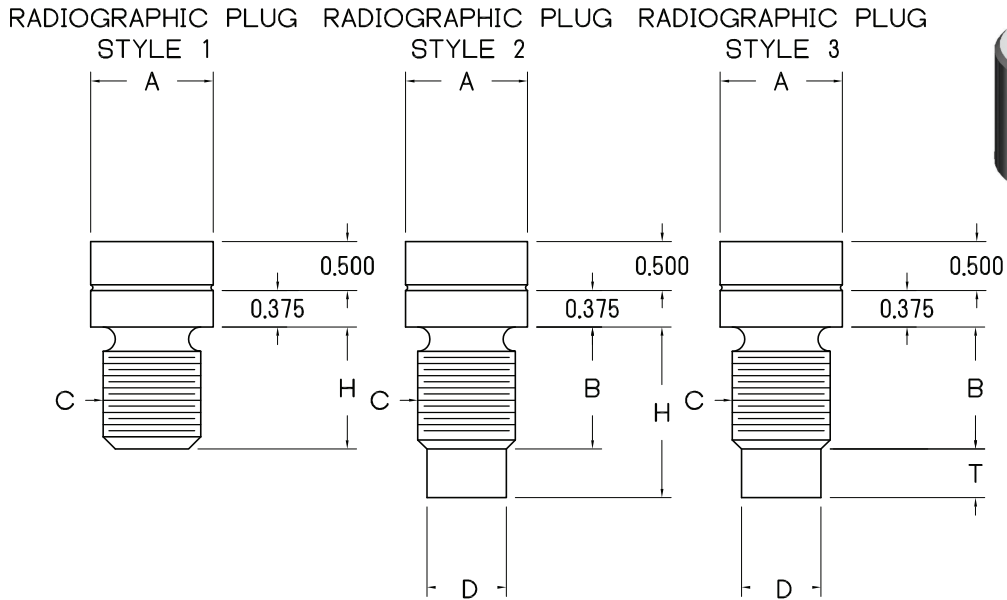
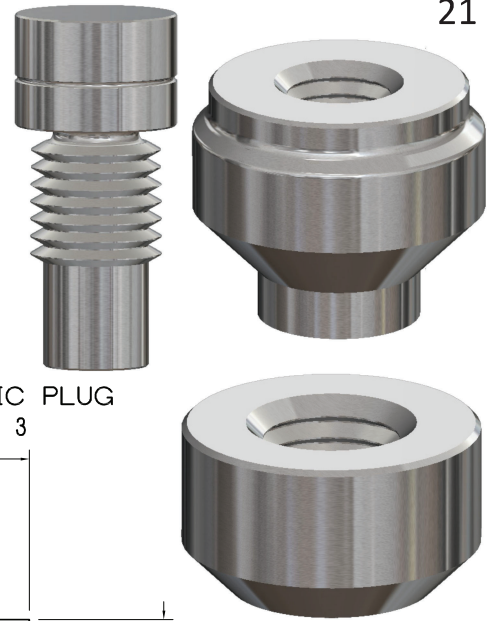


RADIOGRAPHIC PLUGS AND BOSSES

SIZE : 1 - 2

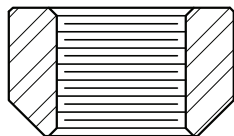
MATERIAL : ALL ASTM / ASME MATERIAL GRADES

PRODUCT CONFORMITY : PFI ES-16



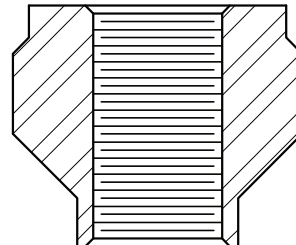
BASIC DIMENSIONS - BOSS AND PLUG									
PFI FIG.	PIPE WALL RANGE	PLUG STYLE	BOSS STYLE	A	B	C	D	H	T
1	< 0.625	1	N/A	1.25	N/A	1"-8 UNC-3A	N/A	0.625	N/A
2	0.625 - 1.375	1	N/A	1.25	N/A	1"-8 UNC-3A	N/A	= MIN. WALL	N/A
3	1.376 - 3.000	2	N/A	1.25	1.25	1"-8 UNC-3A	0.813	= MIN. WALL	N/A
4	3.001 - 5.000	2	N/A	1.75	1.50	1 1/2"-6 UNC-3A	1.234	= MIN. WALL	N/A
5	> 5.000	2	N/A	2.25	2.00	2"-4 1/2 UNC-3A	1.656	= MIN. WALL	N/A
6	< 0.625	3	1	1.25	1.00	1"-8 UNC-3A	0.813	N/A	= NOM. WALL
8	< 1.500	3	2	1.25	1.50	1"-8 UNC-3A	0.813	N/A	= NOM. WALL
9	1.501 - 3.250	3	2	1.75	1.75	1 1/2"-6 UNC-3A	1.234	N/A	= NOM. WALL
10	> 3.250	3	2	2.25	2.00	2"-4 1/2 UNC-3A	1.656	N/A	= NOM. WALL

RADIOGRAPHIC BOSS
STYLE 1



OPTIONAL SUBSTITUTE TO WELD BUILD UP WHEN PIPE WALL IS LESS THAN 5/8.

RADIOGRAPHIC BOSS
STYLE 2



INTEGRALLY REINFORCED BOSS FOR CREEP SERVICE