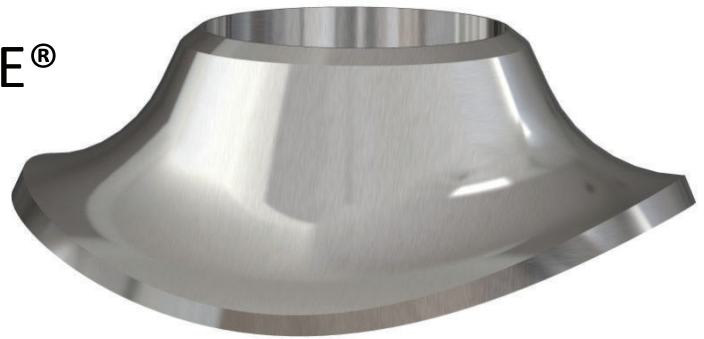


SWEEP INSERT BRANCHETTE®



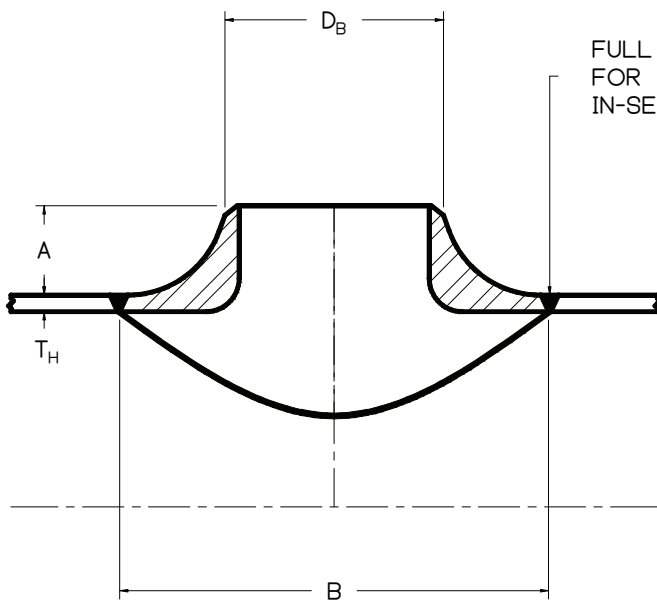
SIZE : 1 1/4 - 24 **IDENTIFICATION / SCHEDULE :** PER ASME B36.19 & B36.10

MATERIAL : ALL ASTM / ASME MATERIAL GRADES

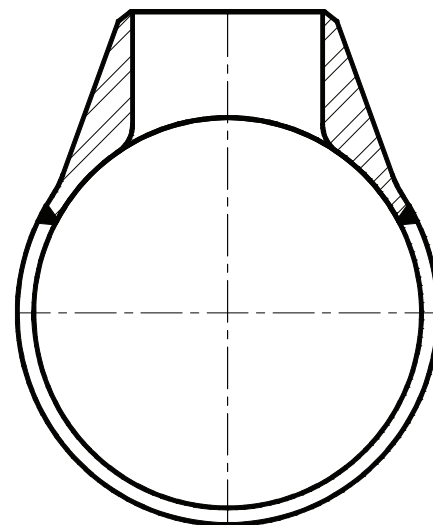
PRODUCT CONFORMITY : MSS SP-97, ASME B16.25, ASME B31.1, ASME B31.3

THE SWEEP INSERT BRANCHETTE IS WOI'S TRADITIONAL WELD-IN CONTOUR INSERT BRANCH OUTLET FITTING. LIKE WOI'S BUTT WELD INSERT BRANCHETTE, IT IS AN INTEGRALLY REINFORCED INSERT BRANCH CONNECTION DESIGNED SPECIFICALLY FOR CYCLIC CONDITIONS, EXTREME PRESSURE/TEMPERATURE, SAFETY RELIEF VALVE APPLICATIONS, OR CRITICAL SERVICE. WHILE THE BUTT WELD INSERT BRANCHETTE IS LESS EXPENSIVE AND COSTS LESS TO INSTALL DUE TO ITS SMALLER FOOTPRINT, WOI DOES OFFER THE SWEEP INSERT BRANCHETTE FOR THOSE CLIENTS WHO ABSOLUTELY WANT NO OTHER FITTING.

DIMENSIONS		
NPS	A	B
1 1/4	1 1/4	4
1 1/2	1 3/4	5 1/2
2	1 1/2	5 1/2
3	1 11/16	7
4	2 1/16	8 3/4
6	2 11/16	13
8	3	15
10	3 1/8	18 1/2
12	3 5/16	20 1/2
14	3 5/8	24
16	3 3/4	28
18	4 5/8	31
20	5 1/8	33
24	5 5/8	38



FULL PENETRATION BUTT WELD FOR EASE OF NDT AND IN-SERVICE INSPECTION



TRANSVERSE SECTION

LONGITUDINAL SECTION

- NOTES :**
1. LARGER SIZES AND SPECIAL DIMENSIONS AVAILABLE
 2. FULL SIZE, FIRST REDUCTION AND SECOND REDUCTION ARE NOT MANUFACTURED.