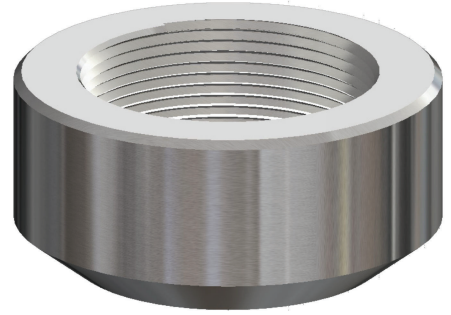


# THREADED BRANCHETTE®

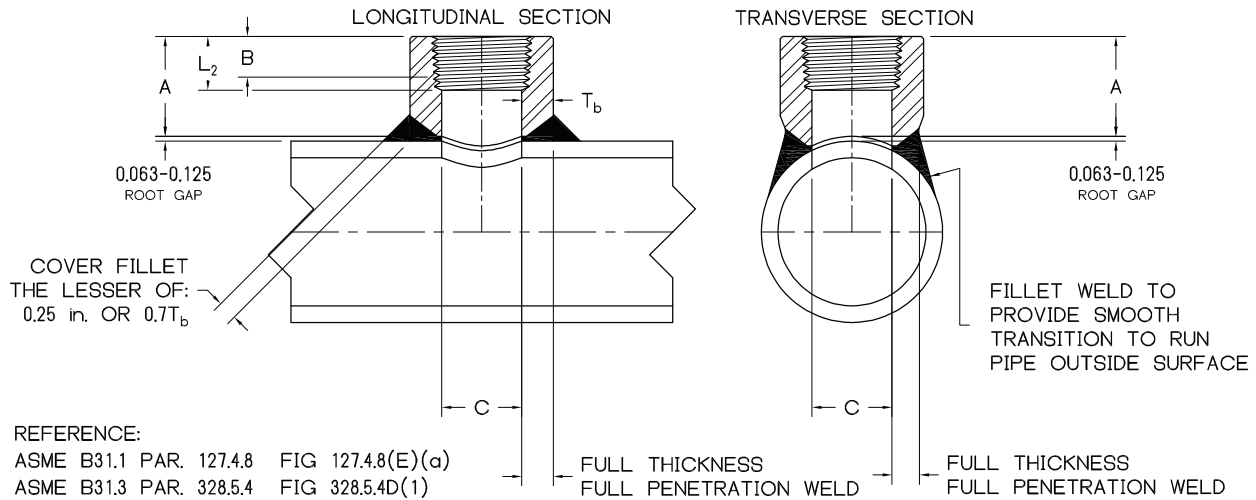


SIZE : 1/8 - 4

CLASS : 3000, 6000, 9000 / 10000

MATERIAL : ALL ASTM / ASME MATERIAL GRADES

PRODUCT CONFORMITY : MSS SP-97, ASME B16.11, ASME B1.20.1 (NPT), ASME B31.1, ASME B31.3



## DIMENSIONS AND CONSOLIDATIONS

NPS	SEE NOTE 2		CL.3000 ( 3M )				CL.6000 ( 6M )				CL.9000 ( 9M )/CL.10000 ( 10M )			
	B	L <sub>2</sub>	A	C	WT	CONSOLIDATION	A	C	WT	CONSOLIDATION	A	C	WT	CONSOLIDATION
1/2	0.43	0.5337	1	0.718	0.28	1/2 1 1/2 - 3/4 36 - 2	1 1/4	0.718	0.44	1/2 1 1/2 - 3/4 36 - 2	1 1/4	0.718	0.56	1/2 1 1/2 - 3/4 36 - 2
3/4	0.50	0.5457	1 1/16	0.922	0.39	3/4 1 1/2 - 1 2 1/2 - 2 36 - 3	1 7/16	0.922	0.67	3/4 1 1/2 - 1 2 1/2 - 2 36 - 3	1 7/16	0.922	0.79	3/4 1 1/2 - 1 2 1/2 - 2 36 - 3
1	0.58	0.6828	1 5/16	1.141	0.73	1 2 - 1 1/4 4 - 2 1/2 36 - 5	1 9/16	1.141	1.12	1 2 - 1 1/4 4 - 2 1/2 36 - 5	1 9/16	1.141	1.38	1 2 - 1 1/4 4 - 2 1/2 36 - 5
1 1/4	0.67	0.7068	1 5/16	1.500	0.96	1 1/2 - 1 1/4 3 1/2 - 2 8 - 4 36 - 10	1 5/8	1.500	1.42	1 1/2 - 1 1/4 3 1/2 - 2 8 - 4 36 - 10	1 5/8	1.500	1.80	1 1/2 - 1 1/4 3 1/2 - 2 8 - 4 36 - 10
1 1/2	0.70	0.7235	1 3/8	1.734	1.12	1 1/2 2 3 1/2 - 2 1/2 10 - 4 36 - 12	1 11/16	1.734	2.17	1 1/2 2 3 1/2 - 2 1/2 10 - 4 36 - 12	1 11/16	1.734	2.30	1 1/2 2 3 1/2 - 2 1/2 10 - 4 36 - 12
2	0.75	0.7565	1 1/2	2.219	1.66	2 2 1/2 4 - 3 10 - 5 18 - 12 36 - 20	2 1/16	2.219	3.73	2 2 1/2 4 - 3 10 - 5 18 - 12 36 - 20	2 1/16	2.219	4.15	2 2 1/2 4 - 3 10 - 5 18 - 12 36 - 20

NOTES : 1. LARGER SIZES, SPECIAL DIMENSIONS AND SPECIAL THREADS AVAILABLE

2. DIMENSION B IS MINIMUM OF PERFECT THREAD. THE LENGTH OF USEFUL THREAD (B PLUS THREADS WITH FULLY FORMED ROOTS AND FLAT CRESTS) SHALL NOT BE LESS THAN L<sub>2</sub> (EFFECTIVE LENGTH OF EXTERNAL THREADED) PER ASME B1.20.1

3. T<sub>b</sub> AVAILABLE UPON REQUEST

4. WEIGHTS BASED ON CARBON STEEL

Listed consolidations are for Stainless-Chrome-Alloy Branchettes® For A105 Consolidations see page 34